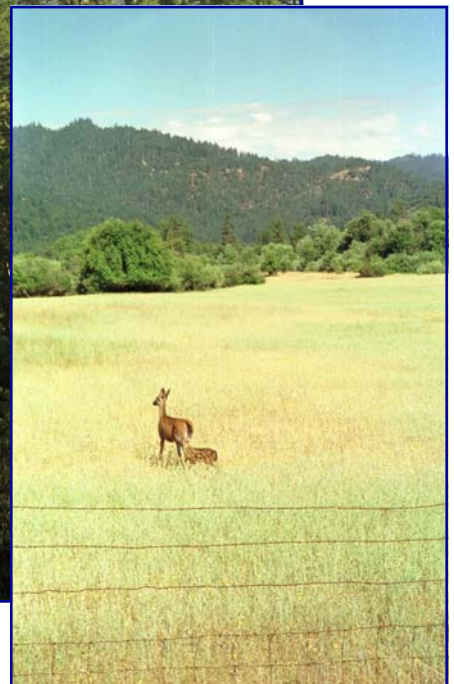
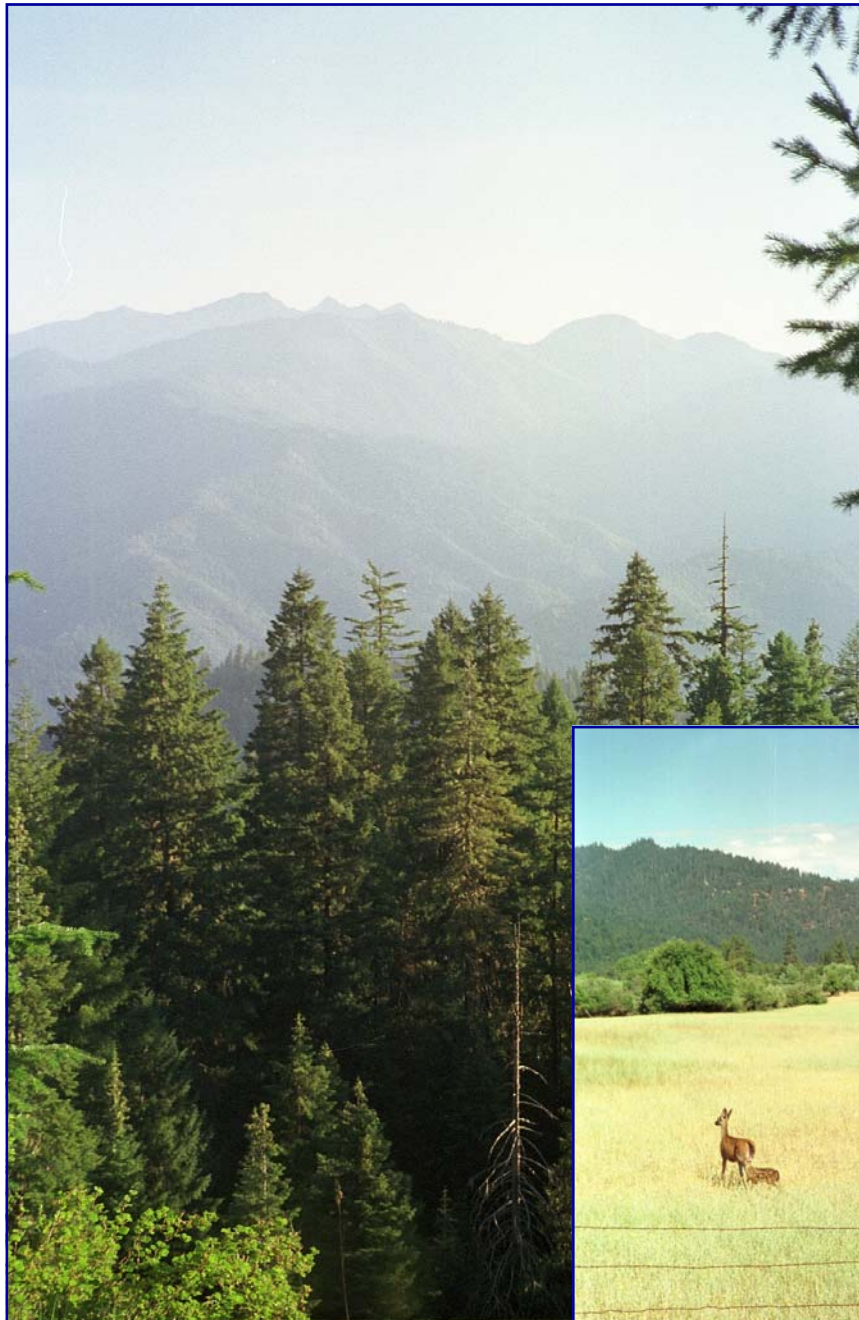


2000 - 2005



Strategic Plan

Trinity County Resource Conservation District



Foreword

This document sets forth an adaptable 5-year strategic plan that will assist in guiding Trinity County Resource Conservation District operations. This document defines our organization’s goals for the future and how it can best achieve it’s mission. The Board of Directors took the necessary look at the District’s purpose, where we are now, where we want to be in the future, and how to arrive at our destination. In the process we examined our strengths, weaknesses, and resource opportunities.

We started this process revising our mission statement, and then developed a vision statement. From there the Board began identifying strategic



issues and establishing goals, action items, and the desired results for each issue. The issues were identified with an understanding of current trends present in today’s society. It is clear that in the future, Trinity County must address resource issues predicting the county will see increased population and greater demands on its natural resources. Throughout

California, the “watershed approach” is being used to address resource issues. This requires the private landowners to be part of the approach. The Board also took into consideration how federal and state governments are looking to local leadership as a means of addressing natural resource issues. We felt it imperative our resource conservation delivery system be strengthened to work with the many private landowners and partners in our community who provide for the health of our watersheds and its economy.

The following strategic issues focus on maintaining a voluntary approach to resource enhancement and protecting landowners’ rights.

Geography

Trinity County is 3,222 square miles located in the rugged terrain of the northwestern mountains of California. Elevation ranges from 600 to 9,025 feet. Several deep river canyons traverse the County and the resulting dissected relief has steep slopes. The mild climate has four distinct seasons, although none is extreme. The majority of the County is under some form of public ownership, including the Trinity Alps Wilderness area, the Shasta-Trinity National Forest,

Bureau of Land Management, Bureau of Reclamation, and various state and county entities.

Land uses in the County have generally centered around natural resource development. Recreation, logging, mining, fisheries, and agriculture are the predominant uses. The communities are small and



rural. Weaverville, the county seat, is the largest with 3,500 residents. As a result of the extent of public land ownership, relative inaccessibility, combined with a limited job market, Trinity County is only sparsely settled, with a population of less than 15,000 residents.

Mission Statement

To assist people in protecting, managing, conserving and restoring the natural resources of Trinity County through information, education, technical assistance and project implementation.

Vision Statement

Trinity County Resource Conservation District envisions a balance between utilization and conservation of our natural resources. Through economic diversity and ecosystem management, our communities will achieve and sustain a quality environment and healthy economy.

***Strategic Area:* ORGANIZATION**

Goals

Identify and pursue adequate funding to support delivery of conservation efforts.

Develop and maintain Partnerships to promote delivery of District programs and services.

Develop and maintain a highly skilled and motivated staff.

Action Items

- Obtain and maintain grant funding from state, federal and local sources
- Provide fee-for-service work for local projects.
- Secure necessary support of in-kind services, volunteers and contributions.

- Provide staff training to improve program implementation and enhance staff skills and expertise.
- Strengthen internal communication.
- Conduct regular assessments of district salary structure and make appropriate adjustments to maintain competitiveness.

Desired Outcome

Maintenance and improvement of an effective organization capable of delivering services throughout the District.

Enhanced relationships between District and its partners.

Improved organizational communication for all staff.



Strategic Area: **EDUCATION/OUTREACH**

Goals

Increase the community's awareness of the District and its programs.

Increase community leaders' awareness of the District and its programs.

Promote environmental education.



Action Items

- Assess landowners' needs.
- Improve landowner awareness of resource issues through District newsletter, informational brochures, press releases and participation in community forums.
- Sponsor tours and workshops of recent District projects, highlighting conservation strategies.
- Sponsor forums and tours that address common resource concerns.
- Speak to community service organizations, and local government forums.
- Facilitate the development of curriculum to fully address resource management issues.
- Participate in local, state and national environmental education events.
- Respond to local schools' needs by providing resource specialists and coordinating with other educational youth programs.

Desired Outcome

Increased public awareness of resource issues and solutions.

Increased awareness of District's ability to deliver technical assistance.

Improved communication between District and its partners.

Enhanced role of District in the community.

Strategic Area: **WATERSHEDS**

Goals

Participate in the development and implementation of policies and programs to improve and maintain watershed health.

Implement stream restoration and erosion control projects to improve fisheries habitat and conserve soil resources on private and public lands.

Promote countywide use of native plants.



- Continue involvement and participation in the Trinity River Restoration Program.
- Provide technical assistance to agencies involved in TMDL program.
- Participate in timber harvest plan review with CDF, in high erosion priority areas.
- Provide technical assistance to landowners to participate in state or federal cost-share programs.
- Implement projects to meet TMDL goals.
- Participate in the implementation of the 5 County Coho plan with the county.
- Promote and implement effective monitoring and data management for private landowners and District projects.
- Develop permanent native plant nursery.
- Implement native plant landscaping demonstration sites.
- Coordinate with County Ag Commissioner to develop joint projects addressing integrated pest management.
- Coordinate with county Ag Commissioner to develop joint projects addressing invasive/noxious weeds and exotic plant species.

Desired Outcome

Maintain and improve natural functions of watersheds for multiple uses.

Improve riparian zones and fisheries habitat.

Strategic Area: **FOREST HEALTH**

Goals

Facilitate countywide private land strategic plan for fuels reduction and forest health.

Provide technical assistance to private landowners to improve forest health.

Desired Outcome

Reduce risk of catastrophic fire.

Improved forest health.

Action Items

- Sponsor countywide strategic plan development for fuels management and forest health.
- Work with CDF to develop community fire management plans.
- Develop GIS data and analysis for planning.
- Facilitate neighborhood meetings to plan neighborhood fuels reduction projects.
- Participate in Trinity County Fire Safe Council to coordinate management of fire safety/forest policy on public and private lands.
- Develop timber management plans with landowners.
- Assist landowners in applying for state or federal cost share programs.
- Utilize Registered Professional Forester consultant to assist private timber owners to develop long term timberlands management plans.



***Strategic Area:* AGRICULTURE**

Goals

Assist landowners to improve or maintain agricultural management.

Promote voluntary application of site specific Best Management Practices.



Action Items

- Provide technical assistance to landowners to participate in state or federal cost-share programs.
- Participate with commodity groups, such as cattlemen's association, farm bureau, ag forum, etc.
- Provide technical assistance to increase awareness and promote voluntary application of conservation practices on issues such as pasture vegetation, irrigation and livestock exclusionary fencing.
- Promote use of District's No Till Drill.

Desired Outcome

Increased productivity and well protected soils with minimal detrimental environmental effects.

Improved water quality.

***Strategic Area:* RECREATION**

Goals

Sponsor and support trail systems within the District.



Action Items

- Provide outreach to private landowners to promote trail system issues.
- Coordinate local trail committees.

Desired Outcome

Establish and maintain a network of trails within the District for multiple uses.

***Trinity County Resource
Conservation District***

1 Horseshoe Lane
Post Office Box 1450
Weaverville, CA 96093

(530) 623-6004 * (530) 623-6006

Email: info@tcrd.net

Http://www.tcrd.net
